



**MONDIAL**<sup>®</sup>  
Filati Lana & Cotone - ITALIA



**NEW YORK**

**MATERIALS:** 250 (200,300,350) g. of col. 918 NEW YORK yarn

**No. 4,5 - 5 knitting needles - Darning needle - Cable needle - Skill level: easy - size: 4 (2,6,8) years**

**STITCHES:** Tubular Stitch, rib 2/2, moss stitch, cable 1 (see diagram "cable 1"), cable 2 (see diagram "cable 2").

**TENSION:** 10 x 10 cm = 18 sts. and 25 r. in stockinette st. using no. 5 knitting needles

**PATTERN: Back:** using col. 918 new york yarn and no. 4,5 knitting needles, cast on 62 (56,68,74) sts. Knit 4 r. in tubular st. and 4 cm rib 2/2. Then, using no. 5 knitting needles, knit as foll.: 8(5,11,14) sts. in moss st., k1, 6 sts. following the diagram "cable 1", k1, 7 sts. in moss st., k1, 14 sts. following the diagram "cable 2", k1, 7 sts. in moss st., k1, 6 sts. following the diagram "cable 1", k1, 8(5,11,14) sts. in moss st. Cont. knitting in this way. At 27 (23,31,35) cm from cast-on edge, for armholes shaping, on both edges, bind off 3 sts., 2 sts. and 1 st. When the piece measures 43 (38,48,53) cm bind off the rem. sts.

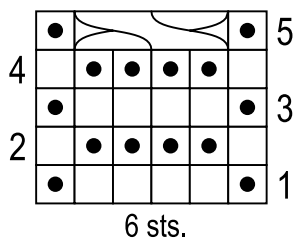
**Front:** using col. 918 new york yarn and no. 4,5 knitting needles, cast on 62 (56,68,74) sts. Knit 4 r. in tubular st. and 4 cm rib 2/2. Then, using no. 5 knitting needles, knit as foll.: 8(5,11,14) sts. in moss st., k1, 6 sts. following the diagram "cable 1", k1, 7 sts. in moss st., k1, 14 sts. following the diagram "cable 2", k1, 7 sts. in moss st., k1, 6 sts. following the diagram "cable 1", k1, 8(5,11,14) sts. in moss st. Cont. knitting in this way. At 27(23,31,35) cm from cast-on edge, for armholes shaping, on both edges, bind off 3 sts., 2 sts. and 1 st. At 40 (36,44,48) cm from cast-on edge, for neckline shaping, bind off 12 central sts., then, on both edges of the latters, decr. 3 sts., 2 sts. and 1 st. When the piece measures 43(38,48,53) cm bind off the rem. sts.

**Sleeve:** using col. 918 new york yarn and no. 4,5 knitting needles, cast on 28(24,32,36) sts. Knit 4 r. in tubular st. and 5 cm rib 2/2. Then, using no.5 knitting needles, knit as foll.: 10(8,12,14) sts. in moss st., k1, 6 sts. following the diagram "cable 1", k1, 10(8,12,14) sts. in moss st. Cont. knitting in this way and, on both edges, incr. 1 st. every 6 r. 8 times. At 28 (25,31,34) cm from cast-on edge, for armholes shaping, on both edges, bind off 3 sts., then, on both edges, decr.1 st. every 2 r. 9 times. When the piece measures 38,5 (34,5-42,5-47) cm, bind off the rem. sts. Make the second sleeve like the first one.

**Hood:** using col. 918 new york yarn and no. 5 knitting needles, cast on 64(58,70,76) sts. Knit as foll.: 3 sts. in tubular st., 7(4,10,13) sts. in moss st., k1, 6 sts. following the diagram "cable 1", k1, 28 sts. in moss st., k1, 6 sts. following the diagram "cable 1", k1, 7(4,10,13) sts. in moss st., 3 sts. in tubular st. Cont. knitting in this way, till 3 cm from cast-on edge, then, on both edges of two central sts., incr. 1 st. every 2 r. 3 times. Then, at 20 (18,22,24) cm from cast-on edge, on both edges of the 2 central sts., decr. 1 st. every 2 r. 4 times. Fold the hood in half, distributing the sts. on 2 knitting needles. Using a cable needle join two pieces tog. in purl st.

**FINISHING:** Sew the shoulders. Join the hood to the neckline. Sew the undersleeve and the side seams. Make 2 pompoms and sew them on the top of the hood following the instructions in the picture.

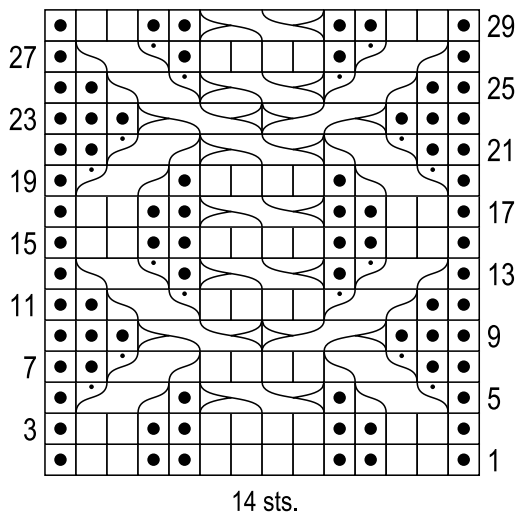
CABLE 1 DIAGRAM



Key:  
every small square corresponds to 1 st. and 1 row  
6th r.: rep. from 2nd r.

- p1
- k1
- 4 sts. crossed to the left (slip 2 sts. onto a cable needle and let it hang in front of work in, k2, then knit stitches off of cable needle)

CABLE 2 DIAGRAM



Key:  
every small square corresponds to 1 st. and 1 row  
Even r. (not represented in the diagram): work the sts. as they appear  
31st r.: rep. from 3rd r.

- p1
- k1
- 3 sts. crossed to the right (slip 1 st. onto a cable needle and let it hang in back of work, k2, purl the st. off of cable needle)
- 3 sts. crossed to the left (slip 2 sts. onto a cable needle and let it hang in front of work, p1, knit the sts. off of cable needle)
- 4 sts. crossed to the right (slip 2 sts. onto a cable needle and let it hang in back of work, k2, knit the sts. off of cable needle)
- 4 sts. crossed to the left (slip 2 sts. onto a cable needle and let it hang in front of work, k2, knit the sts. off of cable needle)

