



1307|11

sweater

Odin Superwash

VIKING
OF NORWAY





Sizes (in years)	2	4	6	8	10	12/14
Chest (in inches, approx.)	23.6	25.2	28	29.9	32.3	34.3
Length (in inches, approx.)	15.4	16.5	18.9	20.1	21.3	23.6
Sleeve Length (in inches, approx.)	11	12.2	13.4	15	16.5	17.7

Materials

Odin Superwash - shade #825 - 100g ball x 4 5 5 6 6 7

Circular needle and double pointed needles size US 9

Gauge

18 sts = approx. 4in over St st using needles size US 9. Check your gauge to ensure success.

STRIPED SWEATER

Back

Using needles size US 9, cast on 54-58-64-68-74-78 sts. Work 8 rows in Garter st. Cont working back and forth in St st and patt as charted until work measures approx. 4-4-4.7-4.7-5.5-5.5in. Leave work aside.

Front

Work same as for back

(Note! Finish with same row as back).

Body

Slip back and front on same circular needle, and cont working in rnds in St st and patt as charted until work measures approx. 9.8-10.6-12.6-13.4-14.2-15.7in. Divide work at sides for armholes. Finish back and front separately.

Back

Cont working back and forth in patt until work measures approx. 15.4-16.5-18.9-20.1-21.3-23.6in. Bind off.

Front

Work same as for back. When work measures approx. 11.8-13-15-16.1-16.5-18.9in, bind off mid st. Finish each side separately. Dec 1 st at split edge inside selvage st approx. 0.8-0.8-0.8-1-1-1in altog. 2 times. When split measures approx. 1.6-1.6-2.4-2.4-2.4-3.1in, bind off at neck edge every 2nd row 1x6-6-7-7-8-8 sts, 1x3 sts, 1x2 sts and 1x1 st. When front measures same as back, bind off. Work same for the other side, rev all shaping.

Sleeves

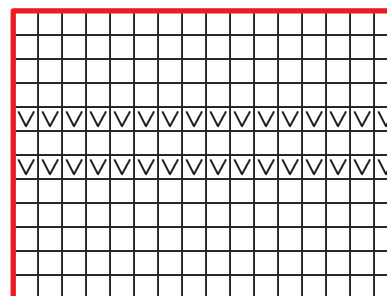
Using needles size US 9, cast on 28-32-32-36-36-40 sts. Work 8 rnds in Garter st. Work 1 rnd in St st, and inc evenly across number of sts to be 34-38-40-42-44-46 sts. Place a marker beg of rnd (= mid under sleeve). Work in patt as charted, and inc 1 st both sides of the marker approx. every 1.2-1.4-1.4-1.6-1.6-1.2in. Rep inc until there is 50-54-58-60-64-72 sts on a rnd, and sleeve measures 11-12.2-13.4-15-16.5-17.7in. Bind off.

FINISHING

Sew shoulder seams.

Neck band

Crochet sc-rnd to neck edge and split mid front, and one rnd in crab st. Sew on sleeves, and weave in all ends on WS.



- Knit on RS, purl on WS
- Purl on RS, knit on WS
- Repeat

Abbreviations

altog	altogether	rep	repeat
beg	begin(ning)	rev	reverse
cont	continue(ing)	rnd(s)	round(s)
dec	decrease(ing)	selvage st	edge stitch that helps make seaming easier
g	grams	st(s)	stitch(es)
inc	increase(ing)	St st	Stockinette stitch
K	knit	WS	wrong side(s)
P	purl		
patt	pattern		